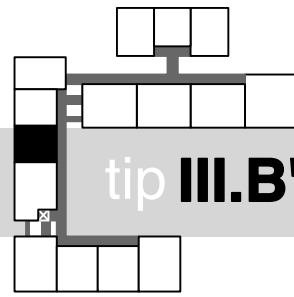




M 1:75



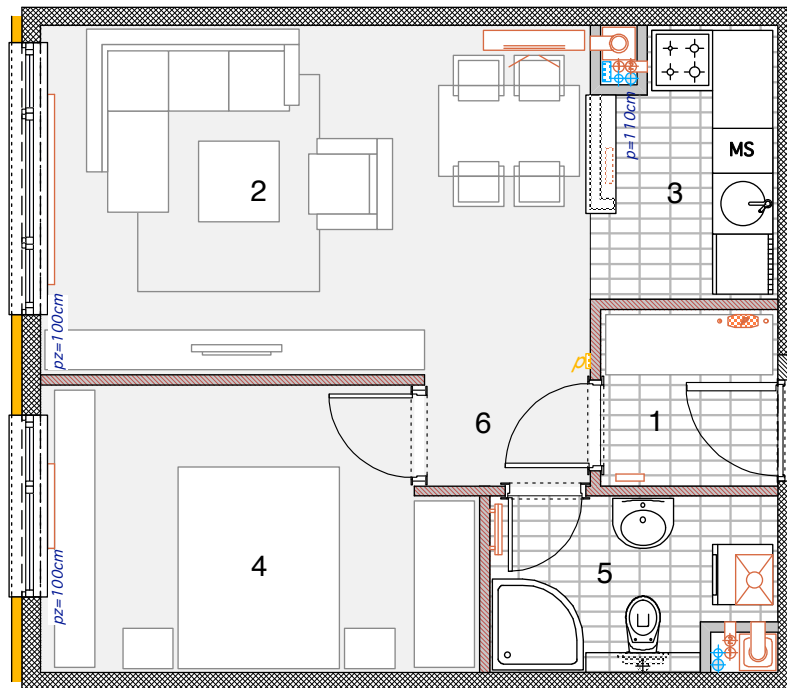
2



tip III.B'

S36

S20
S21
S35



2S	III.B
1 ulaz	3,08 m2
2 boravak i blagovanje	18,95 m2
3 kuhinja	4,67 m2
4 soba	11,71 m2
5 kupaonica	4,62 m2
6 predprostor	1,81 m2
sveukupno	44,84 m2



ARHITEKTURA DUPLANČIĆ

RADMANOVAČKA4_KATALOG STANOVA

sveukupno

44,84 m2