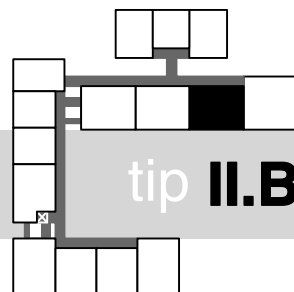


M 1:75



1

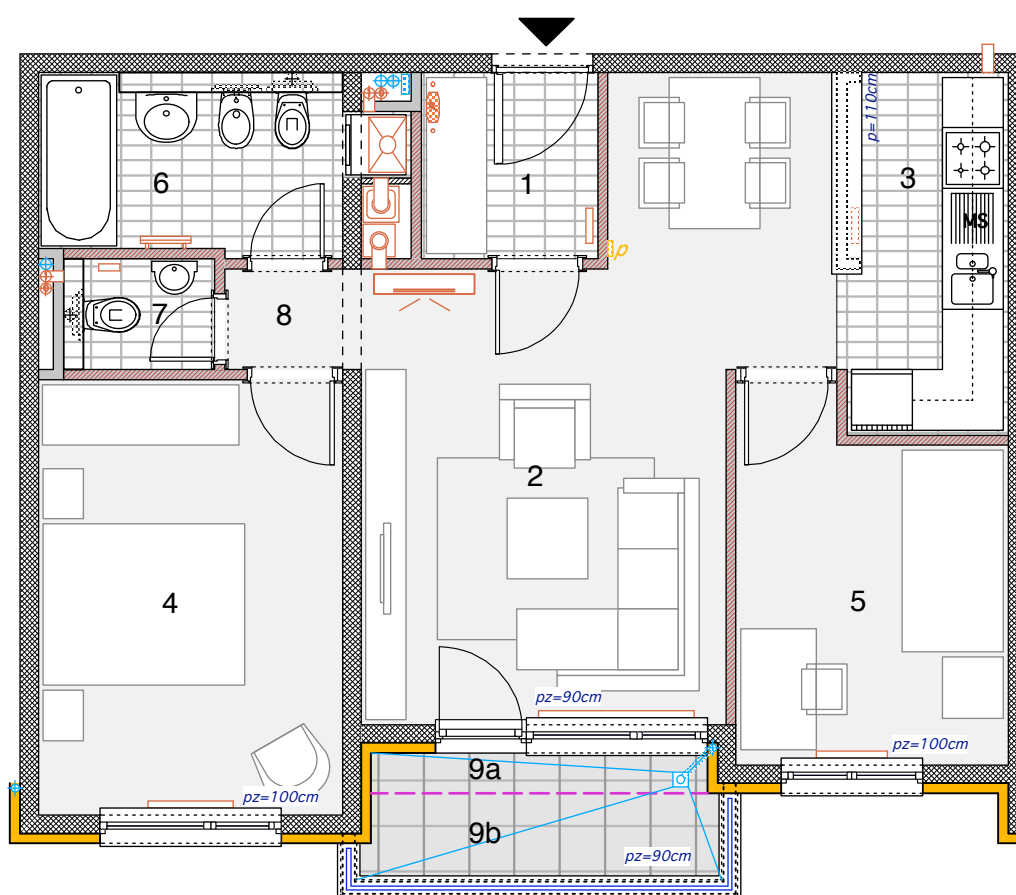


tip II.B

S17

S15

S16



3S

II.B

1	ulaz			3,24 m2
2	boravak i blagovanje			21,89 m2
3	kuhinja			6,06 m2
4	soba1			13,05 m2
5	soba2			9,21 m2
6	kupaonica			5,85 m2
7	wc			1,65 m2
8	predprostor			1,35 m2

**ukupno** **62,30 m2**

9a loggia natkrivena 0,75 x 1,34 m2 = 1,01 m2

9b loggia nenatkrivena 0,25 x 3,04 m2 = 0,76 m2

**sveukupno**

**64,07 m2**



ARHITEKTURA DUPLANČIĆ

RADMANOVAČKA4\_KATALOG STANOVA